

# BITZEE MAGICALS™



USE GEMS  
TO UNLOCK  
ALL 20 FRIENDS!

## COMMON

Baby	Adult	SUPER BITZEE!
		 'PHOENIX'
		 'GHOST KITTY'
		 'YETI'
		 'KITTYCORN'
		 'NESSIE'
		 'MER-PANDA'
		 'FAIRY FIREFLY'
		 'PIXIE PUG'
		 'FAIRY DEER'
		 'CRYSTAL HEDGEHOG'

## RARE

Baby	Adult	SUPER BITZEE!
		 'RAINBOW MER-PUP'
		 'ICE MER-PUP'
		 'LIGHTNING KITSUNE'
		 'DAZZLING KITSUNE'
		 'POISON JACKALOPE'
		 'FLOWER JACKALOPE'

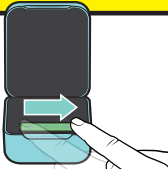
## LEGENDARY

		 'RAINBOW UNICORN'
		 'MOONLIGHT UNICORN'
		 'FIRE DRAGON'
		 'ICE DRAGON'

# 1

## GET STARTED

1

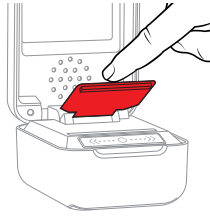


**EXIT TRY-ME -**  
Swipe once from left to right.

2



**TOUCH -**  
Touch the top edge of the flexible display repeatedly to reveal your Magical Bitzee from the gem.

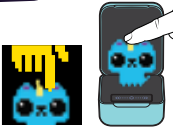


**CAUTION -** Do not poke, grab or pull the flexible display. Only touch the display gently from above.

# 2

## TUTORIAL: LEARN TO PLAY

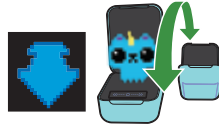
Learn to play with your Bitzee by following the tutorial on screen.



**TOUCH (FROM ABOVE ONLY)**  
Touch the top edge of the flexible display to get your Bitzee!



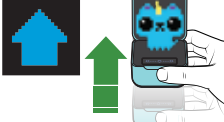
**TILT**  
(left or right)



**TILT**  
(forward or backward)



**SHAKE**  
Shake your Bitzee



**LIFT UP**  
(quickly)

### FEEDING



**SWIPE BAR**  
Swipe finger across bar to enter Main Menu.



**NAVIGATE**  
Swipe until you see the Food icon.



**SELECT**  
Touch the Food icon to feed your Bitzee.



### MAGIC WAND



**SWIPE BAR**  
Swipe finger across bar to enter Main Menu.



**NAVIGATE**  
Swipe until you see the Wand icon.



**SELECT**  
Touch to bring up the Magic Wand.



**SHAKE**  
Shake the pod to wave the Wand and transform your Bitzee.



**TOUCH**  
Touch to interact with your transformed Bitzee.

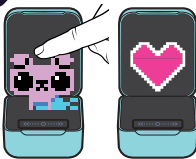


Complete the tutorial stages! Once you finish the tutorial, you are ready to play!

# 3

## PLAYING WITH BITZEE

Play with your Bitzee by interacting with them.



**CARE -**

Use the actions you learned in the tutorial to care for your Bitzee and fill their Love Meter.



**EVOLVE -**

Fill the love meter and your Bitzee will evolve!  
Baby → Adult → Super Bitzee!

Rare and Legendary Bitzee can evolve into 1 of 2 different Super Bitzee (Spitzee™). Each Super Bitzee has a game you can play and gives you a new gem.



**COLLECT -**

Gems you receive can be found in the Treasure Chest. Break them to reveal more Magical Bitzee and collect all 20 Bitzee!

# 4



## MAIN MENU

When playing with a Bitzee, SWIPE to access the menu.  
Touch the flexible display to select a menu option.



**LOVE METER**  
See how close your Bitzee is to evolving!



**MAGIC WAND**  
Touch to select Wand. Shake to cast a silly spell on your Bitzee!



**FOOD**  
Touch to feed your Bitzee.



**CASTLE**  
Touch to open. Swipe through Bitzee. Touch to select Bitzee.



**TREASURE CHEST**  
Touch to open. Swipe through gems. Touch a gem to reveal a new Bitzee.



**SETTINGS**  
Touch to go to Settings Menu.



**GAMES**  
(Super Bitzee only) Each Super Bitzee has a unique game. Touch to play!



**POTIONS**  
(Super Bitzee only) Touch to open. Touch a Potion to change your Bitzee's colors.

# 5

## NEED MESSAGES

Your Bitzee will send a message if they need something.  
Don't ignore these or you could lose a Bitzee!  
Tap on the message to address it or swipe to ignore it.



**LOVE** - Bitzee needs love. Touch to pet them.



**POOP** - Bitzee pooped. Touch to select, then swipe to clean.



**FEED** - Bitzee is hungry. Touch Food icon to feed them.



**SLEEP** - Bitzee is tired. Tilt left and right to rock them to sleep.



**MAGIC MESS** (Super Bitzee only) One of your Bitzee used their powers on another! Select the Magic Wand to clean it up.



## IGNORED MESSAGES

Ignored needs messages appear as red exclamation marks over the Bitzee with the need. Ignore too many needs messages and your Bitzee will run away!  
You can go to the Treasure Chest to break them from a gem again.



# 6

## REVEAL MORE BITZEE



When you want to reveal a new Bitzee, swipe through the menu to the Treasure Chest. If you have gems, touching the Treasure Chest will open it, showing your gems.



Swipe through your gems. Select the gem you want to break by touching it. Touch repeatedly to crack the gem and reveal a new Magical Bitzee. TIP: You start with two extra gems in your Treasure Chest.



When a Bitzee is cracked from a gem, they are added to your collection.



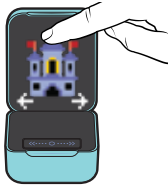
Collect all 20 Bitzee!

# 7

## VIEW YOUR COLLECTION



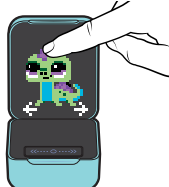
Play with any of the Bitzee you've collected by swiping to the menu.



Swipe to the Castle icon and touch to select.



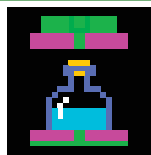
Swipe through your available Bitzee.



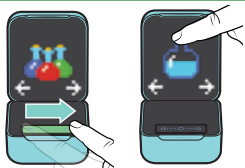
Touch a Bitzee to play with them.

## 8

## POTIONS



Collect Potions in various ways while playing Super Bitzee games.



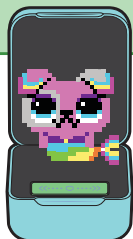
Swipe to the Potion icon and touch to view the Potions you've collected.



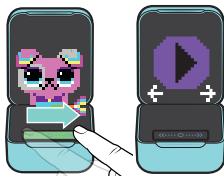
Touch a Potion to give it to your Bitzee. When they drink it, it will permanently change their color!

## 9

## SUPER BITZEE GAMES



When a Bitzee evolves into a Super Bitzee, they have a game you can play.

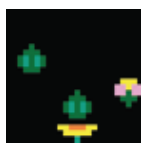


Swipe to enter the menu. Swipe to the Super Bitzee Game icon.



Touch the Game icon to play.

## EASY



## JACKALOPE BOUNCE

- Touch left or right on the Swipe Bar to catch falling flower buds / stink-bombs on the trampoline.
- Bounce them across the screen to safety.



## HEDGEHOG FORTUNE TELLER

- Swipe the swipe bar 3 or 4 times to swirl the mists in the crystal ball.
- Tap the display to reveal a fortune or grab a potion if you see one.



## DRAGON CHEF

- Cook the perfect meal! Touch the Swipe Bar when the temperature gauge reaches the mark.



## YETI SNOW STACKER

- Help Yeti stack pink snowballs in a column. Stop the sliding rows by touching the Swipe Bar.
- If you stack a column of 4, you can try to stack a column of potions on the next screen!



## KITSUNE SHOW

- Tap the middle Swipe Bar button to charge lights and batteries / flip cards and bend spoons.
- Tap the left Swipe Bar button to move on to the next item.
- Don't use your powers on the baby Kittycorns!

## MEDIUM



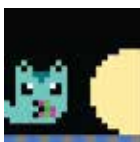
## NESSIE TREASURE HUNTER

- Hold the Swipe Bar to float up, and release to float down.
- Collect jewels and avoid obstacles while searching for a potion treasure chest.



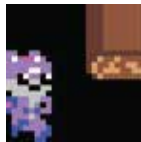
## MER-PANDA CREATURE COUNT

- Watch the creatures swim across the screen.
- Touch left or right on the Swipe Bar to choose the number of creatures matching the prompt.
- Tap the middle Swipe Bar button to confirm your choice.



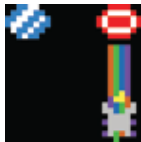
## GHOST KITTY SURPRISE

- Touch the Swipe Bar as the flashlight approaches to disappear and avoid being seen.



## FAIRY DEER SPEED RUN

- Touch right on the Swipe Bar to jump.
- Touch left on the Swipe Bar to duck.
- Jump to collect a potion if you see one.



## UNICORN TARGET PRACTICE

- Tap the left, middle or right Swipe Bar button to shoot a rainbow/moonbeam down the lane.
- Quickly shoot targets, but avoid shooting mirrors.



## PIXIE PUG CLOUD DASH

- Touch the Swipe Bar to make Pixie Pug jump forward onto the moving clouds.
- Jump over fruit or a potion if you see them.

## CHALLENGING



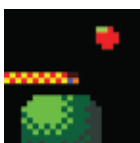
## FAIRY FIREFLY FLIP

- Touch left and right on the Swipe Bar to select different squares.
- Tap the middle Swipe Bar button to flip the color of the selected square and the squares surrounding it.
- Make all the squares the same color to win.



## MER-PUPPY SING-ALONG

- Mer-Puppy will sing a sequence of notes.
- Repeat the song by tapping the Swipe Bar buttons in the same sequence.



## PHOENIX FIRE TRAIL

- Touch left on the Swipe Bar to turn left.
- Touch right on the Swipe Bar to turn right.
- Run over fruit for points, but don't set fire to trees with your burning tail!

# SUPER BITZEE GAMES (CONTINUED)

## CHALLENGING



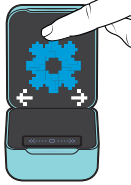
### KITTYCORN PARTY

- Touch left or right on the Swipe Bar to move the highlight between mirrors and Kittycorn's horn.
- Tap the middle Swipe Bar button while highlighting a mirror to rotate it.
- Tap the middle Swipe Bar button while highlighting Kittycorn's horn to shoot a laser.
- Rotate the mirrors to create a path to the discoball for Kittycorn's laser.



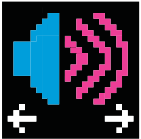
To exit a game at any time, close the pod and re-open it.

## SETTINGS MENU



Swipe through the Main Menu until you see the Settings icon. Touch the icon to select.

### VOLUME



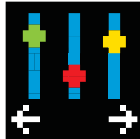
Touch to change the volume.

### GO BACK



Touch Back icon to exit menu.

### ADJUST SCREEN



Touch and hold the center of the swipe bar for 2 seconds to enter screen adjustment. Tap the right side of the swipe bar to move the image up. Tap the left side of the swipe bar to move the image down. Shake to reset to default. Touch the flexible display to confirm.

### RESET BITZEE



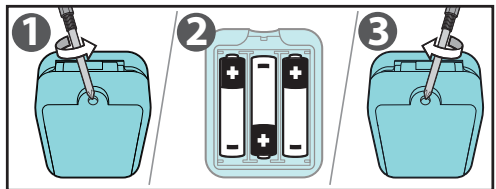
Hold the Bitzee case level and upright. Then, touch and hold the swipe bar to start the countdown. Do not lift your finger until the countdown finishes and you hear the alarm sound effect. Your Bitzee is now reset to the on-shelf demo.

⚠ CAUTION - THIS ACTION CAUSES A FACTORY RESET AND ERASES ALL EXISTING PLAY HISTORY



## REPLACE BATTERIES

### LOW BATTERY WARNING BEFORE REPLACING BATTERIES, SHUT POD, OR YOUR PROGRESS MAY BE LOST.



1. Open the battery door with a screwdriver.
2. If used batteries are present, remove these batteries from the unit by pulling up on one end of each battery. DO NOT remove or install batteries using sharp or metal tools. Install new batteries as shown in the polarity diagram (+/-) inside the battery compartment.
3. Replace battery door securely. Check your local laws and regulations for correct recycling and/or battery disposal. Note: Batteries included are for in-store demonstration and should be replaced to improve performance. Before replacing batteries, shut case, or your progress may be lost.

⚠ **WARNING:** This toy produces flashes that may trigger epilepsy in sensitised individuals. To reduce exposure to such potential, play in a well-lit room, and do not flash lights directly into eyes.

⚠ **WARNING:** This toy contains inaccessible magnets. Exposed magnets, if inhaled or swallowed can stick together or to other metal objects, and can cause serious or fatal injury. Keep away from electronic and medical devices.

⚠ **WARNING:** CHOKING HAZARD - Small parts. Not for children under 3 years.



Spin Master Ltd., 225 King Street West, Toronto ON M5V 3M2 Canada  
Spin Master Inc., PMB #10053, 300 International Drive, Suite 100, Williamsville, NY 14221  
Spin Master International B.V., Kingsfordweg 151, 1043 GR Amsterdam, NL  
Spin Master Australia Pty Ltd, Level 9, 205 Pacific Hwy, St Leonards, NSW 2065; ☎1800 316 982  
Spin Master Toys UK Ltd, Boston House, Boston Drive, Bourne End, Buckinghamshire, SL8 5YS, UK

MADE IN CHINA

T22900\_0006\_20145304\_GML\_IS\_R1\_Magicals\_English

